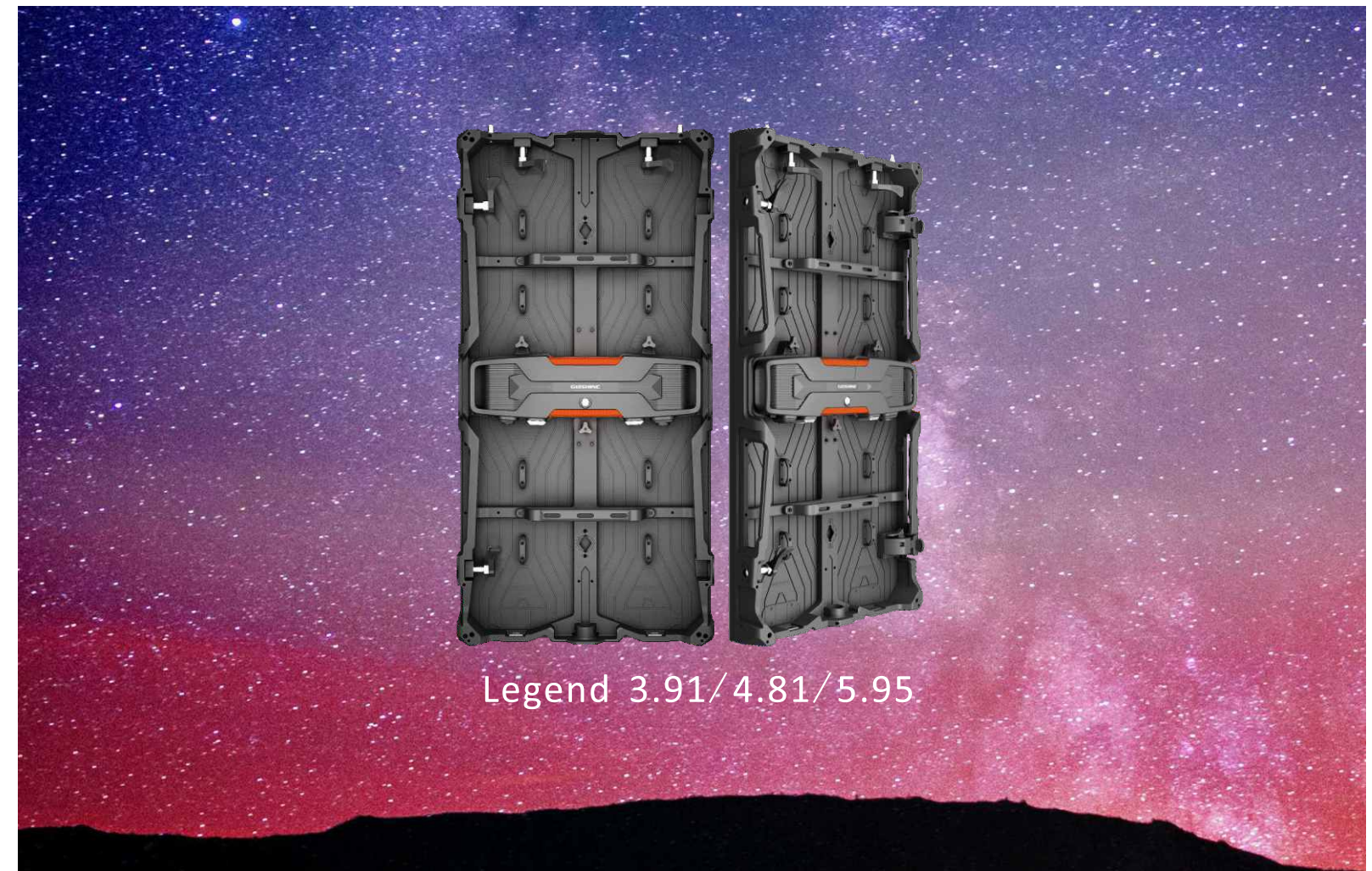


Variable Installation

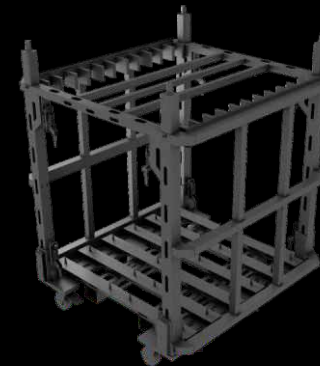


Model No.	Legend 3.91(Outdoor)	Legend 4.81(Outdoor)	Legend 5.95(Outdoor)
Pixel Pitch	3.91mm	4.81mm	5.95mm
LED	SMD1921		
Pixel Density	65536pixel/m ²	43264pixel/m ²	28224pixel/m ²
Brightness	2000-2500nits 3500-4500nits	2000-2500nits 5000-6000nits	2000-2500nits 5000-6000nits
Color Temperature	6500-9500K		
Scan	1/16	1/13(1/7 scan optional)	1/7
Panel Dimension(W*H*D)	500X1000X86mm / 19.7"X39.4"X3.4"		
Panel Resolution	128X256pixel	104X208pixel	84X168pixel
Panel Weight	12.9kg / 28.44lb		
Cabinet Material	Magnesium alloy		
Max Power Consumption	≤800w/m ²		
Average Power Consumption	≤400w/m ²		
Viewing Angle	H:160° V:140°		
Refresh Rate	1920Hz / 3480Hz		
Gray Scale	14-16bit		
IP Rating	Front IP65,Rear IP54		
Operating Humidity	10%-90%RH		
Operating Temperature	-20°C~+45°C		
Max. Stacking	12pcs		
Max. Hanging	12pcs		
Curve(Optional)	-10° 7.5° -5° -2.5° 0° 2.5° 5° 7.5° 10°		
Lifetime	50,000 hrs		
Storage Temp/Humidity	-40°C~+60°C;10%-60%RH		

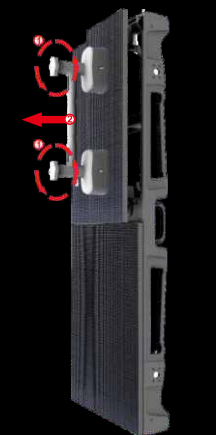


Legend 3.91/4.81/5.95

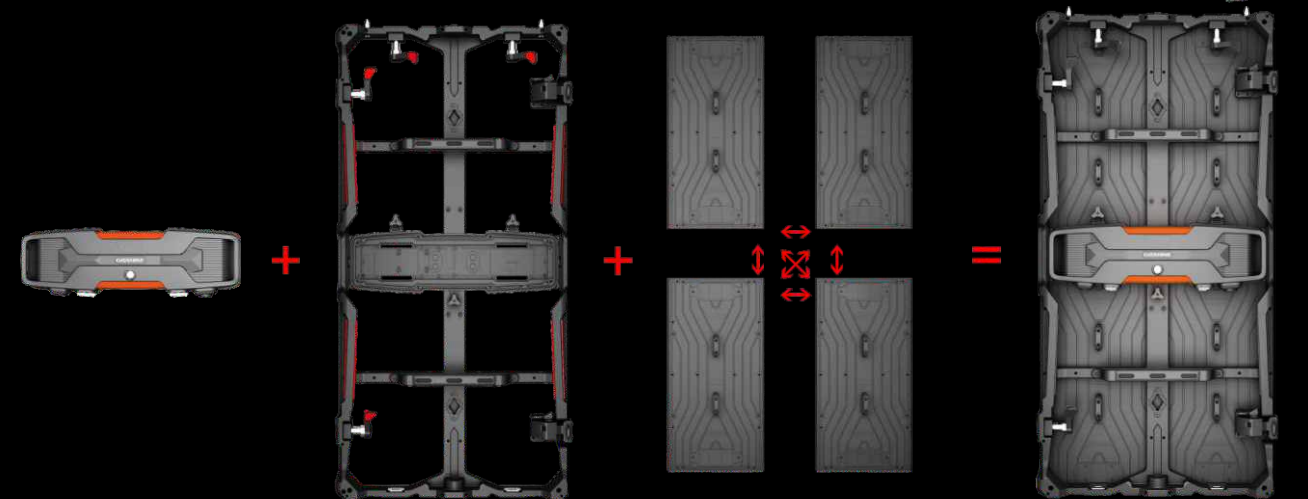
Support Touring Cart



Front & Rear Maintenance



Full Waterproof Design (IP65/IP54)



Modular Design Universal switch of module, power box and cabinet

GLOSHINE
SHENZHEN GLOSHINE TECHNOLOGY CO.,LTD.

Tel : (86)755-29951691
Fax: (86)755-84419301
http://www.gloshine.com
E-mail: international@gloshine.cn
Add: No. 10, North Fuping Road, Pingdi Town,
Longgang district, Shenzhen, China.



Gloshine LED



GloshineLED



gloshinedisplay